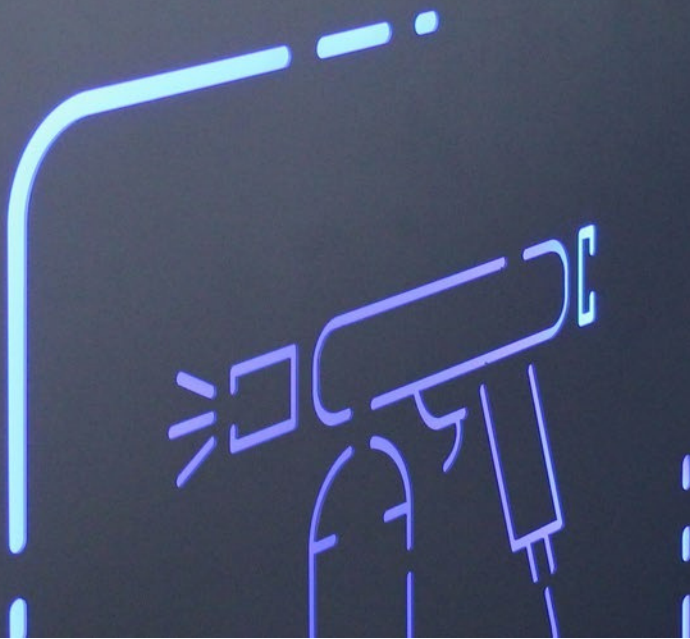


KROMAVIS



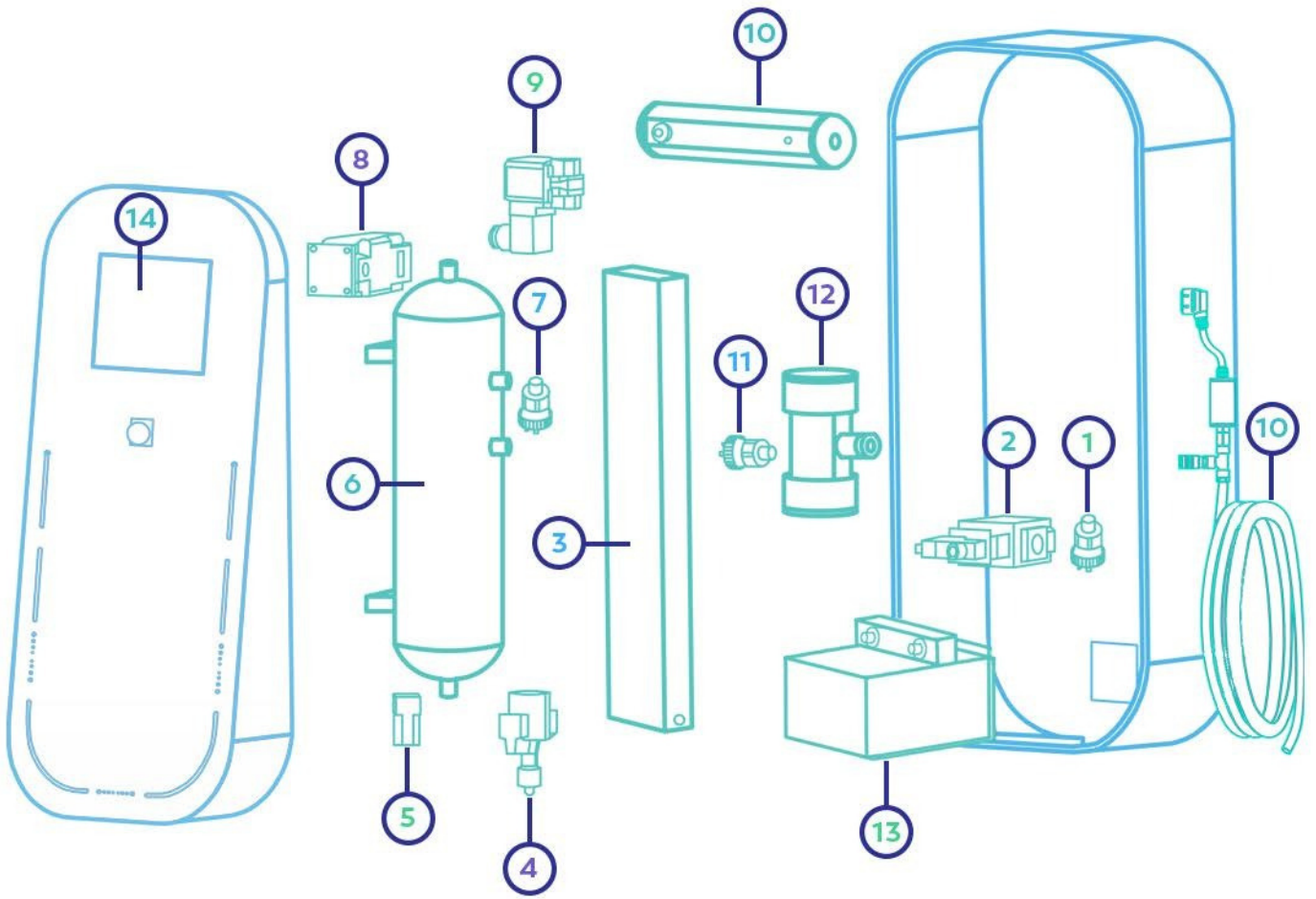
KROMAVIS



360 SUPPLY
solutions

NITROWISE
CATALOGUE
2023

KROMAVIS



LEGEND

- 1 Inlet Pressure Sensor
- 2 Inlet Valve
- 3 Membrane
- 4 Volume Valve
- 5 One way Valve
- 6 Tank
- 7 Tank Pressure Sensor
- 8 Pressure Regulator
- 9 Outlet Valve
- 10 Heater
- 11 Outlet Pressure Sensor
- 12 Ionization
- 13 Cooling System
- 14 Industrial PC

Technical Details

1 | Inlet Pressure Sensor: Measures the pressure passing from the compressor to the machine.

2 | Inlet Valve: Under optimum conditions, the inlet valve opens and activates the air intake into the membrane.

3 | Membrane: The size of the membranes used in the machines determines the main model of the machine. Compressor air is supplied to its inlet. At the exit of the membrane, 99% nitrogen is obtained by gas separation.

4 | Volume Valve: It is used to adjust the flow rate of the gas passing out of the membrane and for adjustment of nitrogen purity.

5 | One way Valve: This valve has one-way permeability, thanks that the gas inside the tank is preserved even if there is negative pressure.

6 | Tank: It provides the storage of nitrogen taken from the membrane. Even if the inlet pressure fluctuates, there is no fluctuation in the output of the machine thanks to the nitrogen in the tank.

7 | Tank Pressure Sensor: It measures the pressure inside the tank. In this way, it is understood whether the tank is full or not.

8 | Pressure Regulator: It allows the gas before it to be regulated, according to that it can adjust the application pressure.

9 | Outlet Valve: It is activated when the machine starts, unless there is an alarm that will adversely affect the process. The purpose of use is security.

10 | Heater: The purpose of the heater is to increase the temperature of the discharged gas and increase its speed, accordingly the application pressure is reduced.

11 | Outlet Pressure Sensor: It is used to measure the pressure at the machine output. It serves to detect any hose cut situation at the machine output.

12 | Ionization: It provides static electricity to the gas coming out of the end of the machine. The ionization system can charge the air with positive or negative ions, controllable on the user interface. The charge level can be adjusted between +25kV and -25kV.

13 | Cooling System: The cooling system is designed to cool the nitrogen produced by the machine to the desired temperature. The nitrogen passing through the heat exchanger is also cooled. Can cool up to +4 degrees up to 300-3000 lt/min. The sensitivity of the system is $\pm 3C$.

14 | Industrial PC: LAN connection programmed for 4.0 Industry, Remote Control, Remote Assistance

NITROWISE 150



PERFORMANCE:

Pressure [bar]	Nitrogen production [m ³ /h]	Air consumption [m ³ /h]
6	5,3	13,7
7	6,4	16
8	7,5	18,3

DIMENSIONS:

Width	[cm]	*70
Depth	[cm]	60
Height	[cm]	160
Weight	[kg]	200

*This dimension do not include the external filters and the heating pipes

Power consumption:	1,2kW
Rated voltage:	230V
Frequency:	50/60Hz
Nominal current:	6A

Nitrowise pipe allows to heat up the flow up 70°C

Ionizator allows to charge the flow up 25kV

CONNECTIONS:

- Inlet size 1/2" Female
- Outlet size 13mm (rubber pipe 13-19mm)
- Electrical connection with Type F plug (Schuko plug)
- LAN port

MAINTENANCE:

Each 2.000 hours or yearly filter substitution is required

NITROWISE 300



PERFORMANCE:

Pressure [bar]	Nitrogen production [m ³ /h]	Air consumption [m ³ /h]
6	12,8	33,3
7	14,9	38,8
8	17,1	44,4

DIMENSIONS:

Width	[cm]	*86
Depth	[cm]	65
Height	[cm]	194
Weight	[kg]	270

*This dimension do not include the external filters and the heating pipes

Power consumption:	1,2kW
Rated voltage:	230V
Frequency:	50/60Hz
Nominal power:	6A

Nitrowise pipe allows to heat up the flow up 70°C

Ionizator allows to charge the flow up 25kV

CONNECTIONS:

- Inlet size 1/2" Female
- Outlet size 13mm (rubber pipe 13-19mm)
- Electrical connection with Type F plug (Schuko plug)
- LAN port

MAINTENANCE:

Each 2.000 hours or yearly filter substitution is required

NITROWISE 500



PERFORMANCE:

Pressure [bar]	Nitrogen production [m ³ /h]	Air consumption [m ³ /h]
6	20,5	48
7	24,3	56
8	28,1	63

DIMENSIONS:

Width	[cm]	*86
Depth	[cm]	65
Height	[cm]	194
Weight	[kg]	280

*This dimension do not include the external filters and the heating pipes

Power consumption:	1,2kW
Rated voltage:	230V
Frequency:	50/60Hz
Nominal power:	6A

Nitrowise pipe allows to heat up the flow up 70°C

Ionizator allows to charge the flow up 25kV

CONNECTIONS:

- Inlet size 1/2" Female
- Outlet size 13mm (rubber pipe 13-19mm)
- Electrical connection with Type F plug (Schuko)
- LAN port

MAINTENANCE:

Each 2.000 hours or yearly filter substitution is required

NITROWISE 1000



PERFORMANCE:

Pressure [bar]	Nitrogen production [m ³ /h]	Air consumption [m ³ /h]
6	41	96
7	48,6	112
8	56,2	126

DIMENSIONS:

Width	[cm]	*86
Depth	[cm]	65
Height	[cm]	194
Weight	[kg]	300

*This dimension do not include the external filters and the heating pipes

Power consumption:	1,2kW
Rated voltage:	230V
Frequency:	50/60Hz
Nominal power:	6A

Nitrowise pipe allows to heat up the flow up 70°C

Ionizator allows to charge the flow up 25kV

CONNECTIONS:

- Inlet size 3/4" Female
- Outlet size 13mm (rubber pipe 13-19mm)
- Electrical connection with Type F plug (Schuko plug)
- LAN port

MAINTENANCE:

Each 2.000 hours or yearly filter substitution is required

NITROWISE 1500



PERFORMANCE:

Pressure [bar]	Nitrogen production [m ³ /h]	Air consumption [m ³ /h]
6	61,5	144
7	72,9	168
8	84,3	189

DIMENSIONS:

Width	[cm]	*102
Depth	[cm]	65
Height	[cm]	194
Weight	[kg]	380

*This dimension do not include the external filters and the heating pipes

Power consumption:	1,2kW
Rated voltage:	230V
Frequency:	50/60Hz
Nominal power:	6A

Nitrowise pipe allows to heat up the flow up 70°C

Ionizator allows to charge the flow up 25kV

CONNECTIONS:

- Inlet size 1" Female
- Outlet size 13mm (rubber pipe 13-19mm)
- Electrical connection with Type F plug (Schuko plug)
- LAN port

MAINTENANCE:

Each 2.000 hours or yearly filter substitution is required

NITROWISE 2000



PERFORMANCE:

Pressure [bar]	Nitrogen production [m ³ /h]	Air consumption [m ³ /h]
6	82	192
7	97,2	224
8	112,4	252

DIMENSIONS:

Width	[cm]	*102
Depth	[cm]	65
Height	[cm]	194
Weight	[kg]	400

*This dimension do not include the external filters and the heating pipes

Power consumption:	1,2kW
Rated voltage:	230V
Frequency:	50/60Hz
Nominal power:	6A

Nitrowise pipe allows to heat up to 70°C
Ionizator allows to charge the flow up 25kV

CONNECTIONS:

- Inlet size 1" Female
- Outlet size 13mm (rubber pipe 13-19mm)
- Electrical connection with Type F plug (Schuko plug)
- LAN port

MAINTENANCE:

Each 2.000 hours or yearly filter substitution is required

NITROWISE 3000



PERFORMANCE:

Pressure [bar]	Nitrogen production [m ³ /h]	Air consumption [m ³ /h]
6	120	276
7	154	348
8	178	399

DIMENSIONS:

Width	[cm]	*102
Depth	[cm]	70
Height	[cm]	194
Weight	[kg]	400

*This dimension do not include the external filters and the heating pipes

Power consumption:	1,2kW
Rated voltage:	230V
Frequency:	50/60Hz
Nominal power:	6A

Nitrowise pipe allows to heat up to 70°C
Ionizator allows to charge the flow up 25kV

CONNECTIONS:

- Inlet size 1"1/2 Female
- Outlet size 13mm (rubber pipe 13-19mm)
- Electrical connection with Type F plug (Schuko plug)
- LAN port

MAINTENANCE:

Each 2.000 hours or yearly filter substitution is required

NITROWISE 4000



PERFORMANCE:

Pressure [bar]	Nitrogen production [m ³ /h]	Air consumption [m ³ /h]
6	171	445
7	201	523
8	221	576

DIMENSIONS:

Width	[cm]	*102
Depth	[cm]	70
Height	[cm]	194
Weight	[kg]	420

*This dimension do not include the external filters and the heating pipes

Power consumption:	1,2kW
Rated voltage:	230V
Frequency:	50/60Hz
Nominal power:	6A

Nitrowise pipe allows to heat up to 70°C
Ionizator allows to charge the flow up 25kV

CONNECTIONS:

- Inlet size 1"1/2 Female
- Outlet size 13mm (rubber pipe 13-19mm)
- Electrical connection with Type F plug (Schuko plug)
- LAN port

MAINTENANCE:

Each 2.000 hours or yearly filter substitution is required

Eguchi Iwao South Africa

Johannesburg Office
Unit 12 Dawn Park,
5 Tugela Road,
Pomona,
Kempton Park,1619
info@eguchi.co.za
[+27\(0\)11 396 1161](tel:+27(0)113961161)

Eguchi Iwao Europe

Banbury Office
Suite 4, The Granary, Upton Estate
Home Farm Drive, Banbury,
Oxfordshire,
X15 6HU
orderseu@eguchi-iwao.com
[+44 \(0\) 3301 289](tel:+44(0)3301289)

360 Supply Solutions

Unit 12 Dawn Park,
5 Tugela Road,
Pomona,
Kempton Park,1619
admin@360ss.co.za
[+27\(0\)11 396 1161](tel:+27(0)113961161)

Eguchi Iwao Europe

Warehouse
Orchard Farm Nursery,
Tysoe Road, Lower Tysoe, Warwickshire,
CV35 0BU
Warehouse
orderseu@eguchi-iwao.com
[+44 \(0\) 7720 378 416](tel:+44(0)7720378416)

Woodfinishes

Unit 19B, Sea King Road, Lynx Industrial Trading
Estate Yeovil
BA20 2NZ
info@woodfinishes-ltd.co.uk
[+44 1935 432841](tel:+441935432841)

Eguchi Iwao South Africa

Durban Office
31 Joyner Road, Prospecton, Durban, 4110
South Africa
info@eguchi.co.za
[+27 \(0\) 319 130 600](tel:+27(0)319130600)

